



# DRIVING CARRIER ETHERNET ACCESS

## Data Sheet

### Metrobility® Ethernet Media Converters

Flexible 10Mbps and 100Mbps media, speed, and distance solutions



10Mbps R111 & 2111  
100Mbps R141 & 2141

The Ethernet and Fast Ethernet media converters by Telco Systems offer versatile speed, media, and distance to cost-effectively distribute fiber optic connections. These units provide seamless connectivity within the LAN, or between the LAN and public or private networks. These Metrobility® devices are available as a preconfigured 10Mbps unit, a selectable 10 or 100Mbps unit, or an auto-negotiating 10/100Mbps unit.

These mixed-media devices offer seamless integration of copper and fiber connections providing full signal restoration for accurate data transmission and maximum cable length support.

The interface line cards are supported in all of the Metrobility platforms and can be managed when configured with a R502-M management card. The standalone options utilize a rugged fabrication to offer superior reliability for the most demanding environments. Each standalone is equipped with an external, universal AC power supply.

#### 10Mbps – Preconfigured

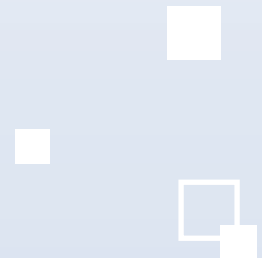
The Metrobility R111 and 2111 preconfigured media converters offer transparent integration of fiber optic connectivity or copper-to-coaxial integration for 10Mbps Ethernet networks.

#### 10 and/or 100Mbps – DIP-switch or software settable

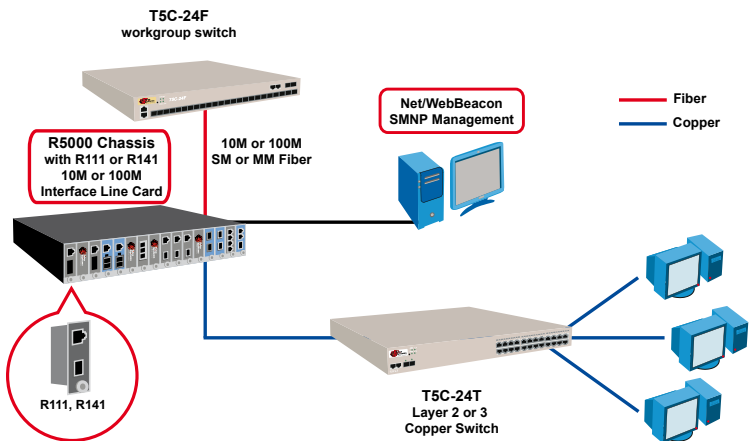
The Metrobility R141 line card and 2141 standalone is a transparent two-port, copper-to-fiber media converter that can be set to either 10Mbps on both ports or 100Mbps on both ports. The R141 line card is support in all Metrobility chassis options. When configured with a management card (R502-M), it may be locally managed through a web browser or with NetBeacon® ESP Element Manager■

### Product Highlights

- ❖ Complete range of fiber optic connector types provide network design flexibility
- ❖ Managed option - NetBeacon® and WebBeacon™ - when configured with a management card in a Metrobility platform
- ❖ High-quality, reliable design lowers long term cost of ownership
- ❖ Full signal restoration - with low bit delay - allows for maximum segment length
- ❖ Fully IEEE 802.3 Compliant ensures compatibility with other vendors' equipment for flexible connectivity
- ❖ Single-strand, bi-directional wavelength multiplexing (BWDM) option
- ❖ Interoperates with half-duplex or full-duplex mode devices
- ❖ Class B certified models



# Metrobility® Ethernet Media Converters



## Key Applications

- Copper-to-fiber conversion
- Distance extension of 2km, 20km, 40km and 100km

## Ordering Information

Part Number	Standalone	Description	Connector	Distance
<b>Line Card</b>				
<b>10Mbps Pre-Configured</b>				
R111-13-B	2111-13-B	10BASE-T to 10BASE-FX (MM)	SC	2km
R111-15-B	2111-15-B	10BASE-T to 10BASE-FX (MM)	ST	2km
<b>10Mbps or 100Mbps Settable</b>				
R141-13	2141-13	10BASE-T to 10BASE-FX or 100BASE-T to 100BASE-FX (MM)	SC	2km
R141-14	2141-14	10BASE-T to 10BASE-FX or 100BASE-T to 100BASE-FX (SM)	SC	20km
R141-15	2141-15	10BASE-T to 10BASE-FX or 100BASE-T to 100BASE-FX (MM)	ST	2km
R141-16	2141-16	10BASE-T to 10BASE-FX or 100BASE-T to 100BASE-FX (SM)	ST	20km
R141-17	2141-17	10BASE-T to 10BASE-FX or 100BASE-T to 100BASE-FX (SM)	SC	40km
R141-1J	2141-1J	10BASE-T to 10BASE-FX or 100BASE-T to 100BASE-FX (SM)	SC	100km
R141-1X *	2141-1X	10BASE-T to 10BASE-FX or 100BASE-T to 100BASE-FX (SM – BWDM) 1550nm/1310nm	SC	20km
R141-1Y *	2141-1Y	10BASE-T to 10BASE-FX or 100BASE-T to 100BASE-FX (SM – BWDM) 1310nm/1550nm	SC	20km

\* Must be ordered in pairs (-1X and -1Y). Each end of the link must be configured with a different receive and transmit wavelength.

## Specifications

### Environmental

Operating Temperature  
0°C to 50°C  
Operating Humidity  
5% to 95% non-condensing  
Storage Temperature  
-25°C to 70°C

### Standards Compliance

IEEE 802.3  
IEEE 802.3u

### Physical Specifications

#### Standalone (21xx)

Dimensions 4.8"L x 3.3"W x 1.7"H  
12.3cm x 8.3cm x 4.3cm  
Weight 1 lb; .45 kg  
Power, Universal  
90-250V AC 50/60Hz

### Safety and EMC Compliance

UL CE  
CSA CB  
FCC Part 15, Class A (x111)  
FCC Part 15, Class B (R141)  
EN55022 Class A emissions (x111)  
EN55022 Class B emissions (R141)  
EN55024: 1998 (immunity)  
EN60950 (safety)  
ICES-003 Class A emissions (x111)  
ICES-003 Class B emissions (R141)  
IEC 825-1 Classification  
Class 1 Laser Product



U.S. ■ EUROPE ■ APAC

[www.telco.com](http://www.telco.com)

#### Int'l Headquarters

Tel: +972-9-866-2525  
Fax: +972-9-866-2500  
[sales.emea@telco.com](mailto:sales.emea@telco.com)  
<http://www.telco.com>

#### US Headquarters

Tel: +1-800-221-2849  
Fax: +1-781-551-0538  
[sales@telco.com](mailto:sales@telco.com)  
<http://www.telco.com>

#### Germany

Tel: +49-241-4635490  
Fax: +49-241-4635491  
[info@batm.de](mailto:info@batm.de)  
<http://www.telco.com>

#### France

Tel: +33(0)1-567-12-773  
Fax: +33(0)1-437-71-780  
[support@batm.fr](mailto:support@batm.fr)  
<http://www.batm.fr>

#### Asia Pacific

Tel: +65-6725-9901  
Fax: +65-6725-9889  
[info.apac@telco.com](mailto:info.apac@telco.com)  
<http://www.telco.com>

#### Japan

Tel: +81(3)5211-1705  
Fax: +81(3)5510-9131  
[Info.jp@telco.com](mailto:Info.jp@telco.com)  
<http://www.telco.com>