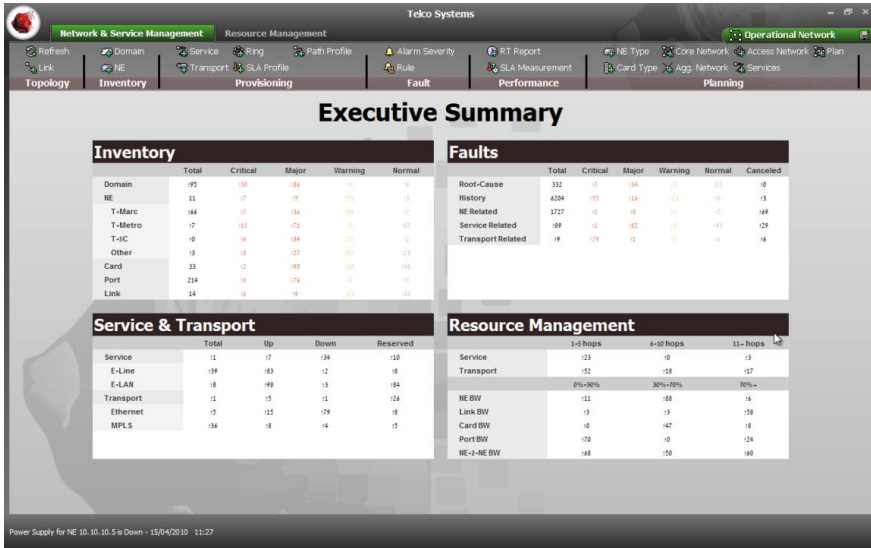


ETHERNET SERVICE MANAGEMENT



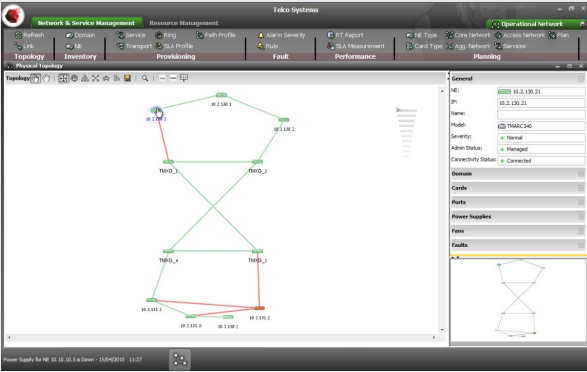
Telco Systems' EdgeGenie service management platform with advanced planning and resource management functionality offers a complete solution for full life cycle of network deployment from planning to managing, monitoring and maintaining services over Carrier Ethernet and MPLS networks.

MAJOR APPLICATIONS

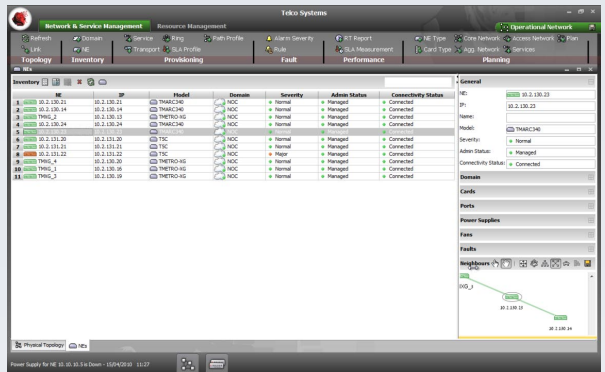
- Network Management
- Service Management
- Resource Management/Optimization
- Network/Service Planning

- 1 Network Management System** with advanced FCAPS functionality providing a full control of Carrier Ethernet and MPLS networks.
- 2 Service Management System** enabling and monitoring end-to-end services over Ethernet and MPLS networks. Advanced path computation algorithms, "point and click" provisioning and provisioning through 3rd party vendors' MPLS cloud, lowering OPEX by dramatically reducing complexity of service provisioning.
- 3 Resource Management and Optimization** application provides carriers and service providers profound understanding of their network bottlenecks, allowing them to better utilize their existing network without additional CAPEX spending.
- 4 Network and Service Planning** allows carriers to run "what if" scenarios on their existing network topology, experiment with new topologies and services planning or estimate enhancements to their existing operational network.
- 5 SLA Manager** for defining, measuring and analyzing customer SLAs. Threshold crossing alarms (TCAs) provides indication before SLA breach.
- 6 Real-time and historical performance management** for 360° view of the service key performance indicators and key quality indicators.
- 7 Device Manager** provides a real-time craft interface to manage all supported devices.

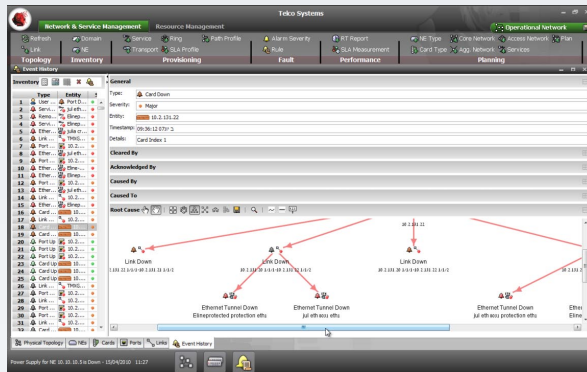
ETHERNET SERVICE MANAGEMENT



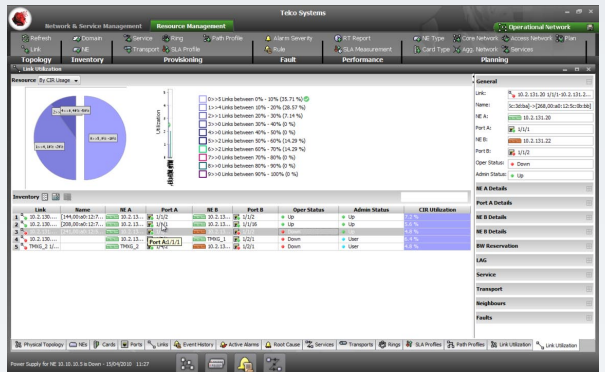
Physical Topology



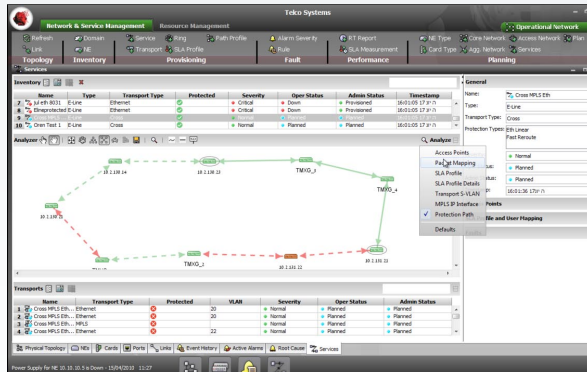
Inventory



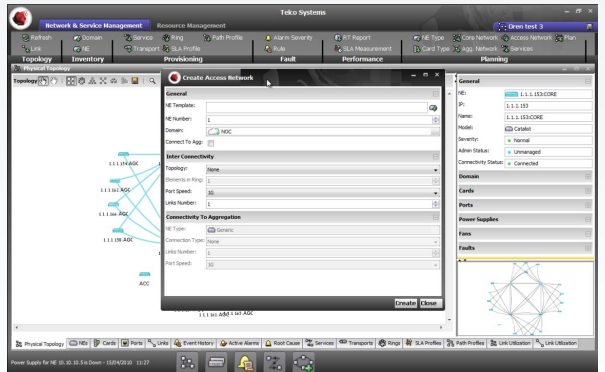
Faults - Root Cause Analysis



Link Utilization



Service Analyzer



Network Planning



Int'l Headquarters
 Tel: +972-9-866-2525
 Fax: +972-9-866-2500
 sales.emea@telco.com
 http://www.telco.com

US Headquarters
 Tel: +1-800-221-2849
 Fax: +1-781-551-0538
 sales@telco.com
 http://www.telco.com

Germany
 Tel: +49-241-4635490
 Fax: +49-241-4635491
 info@batm.de
 http://www.telco.com

France
 Tel: +33(0)1-567-12-773
 Fax: +33(0)1-437-71-780
 support@batm.fr
 http://www.batm.fr

Asia Pacific
 Tel: +65-6224-3112
 Fax: +65-6220-5848
 info.apac@telco.com
 http://www.telco.com

Japan
 Tel: +81(3)5215-5709
 Fax: +81(3)5215-5704
 info.jp@telco.com
 http://www.telco.com