



X-Metro 7280

Compact High-Performance Carrier Ethernet Switch

Built with advanced Layer 2/3, MPLS, QoS capabilities, the XM-7280 supports critical applications such as 4G/5G mobile backhaul, business services, and data center interconnects. It ensures reliability and scalability while meeting diverse requirements for bandwidth, latency, and packet loss.

The XM-7280 supports 1588v2 (OC, BC, and TC) for high-precision clock synchronization and is compliant with ITU-T G.8275.1, making it ideal for next-generation mobile backhaul and fixed-mobile convergence networks.

Highlights

Compact Design with High Capacity

Delivers 500 Gbps switching capacity in a compact 1RU form factor, ideal for space-constrained environments.

Precision Synchronization

Equipped with **SyncE** and **1588v2** for precise timing, ensuring reliable performance for critical applications.

Flexible Connectivity Options

Features **28 x 10G/1G SFP+ ports**, providing scalable solutions for high-bandwidth demands.

Robust Network Reliability

Built with advanced hardware-based OAM and redundancy mechanisms to ensure network uptime and service continuity.

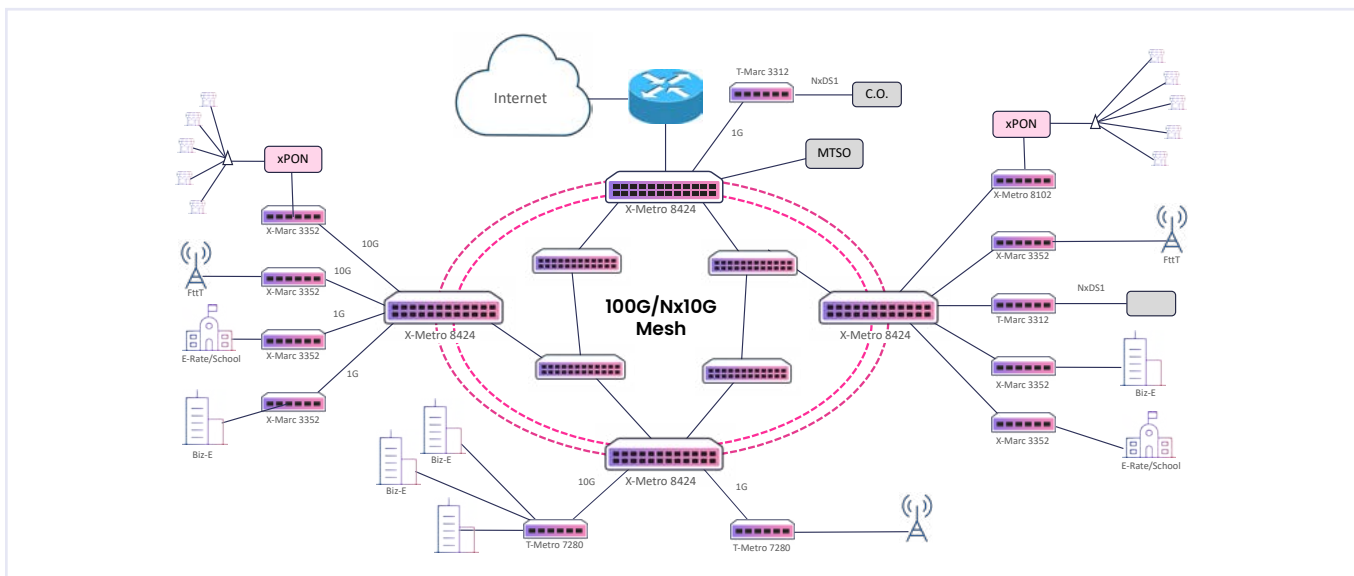
Technical Specifications

| | |
|------------------------------|--|
| Interfaces | 28 x 10G/1G SFP+ |
| Switching Capacity | 500 Gbps |
| Synchronization | SyncE, 1588v2 (OC, BC, TC) |
| Management | CLI, SNMP, Netconf, USB, Telnet, SSHv2 |
| QoS Features | 8 queues per port, WRED, SP/WRR |
| Security | ACLs, RADIUS, TACACS, 802.1x |
| Redundancy | Dual AC/DC power, LAG, MC-LAG |
| Operating Temperature | -5°C to +55°C |
| Enclosure Type | 1U, 19" rack-mountable |
| Dimensions (WxDxH) | 44 cm x 36 cm x 4.4 cm 17.32" x 14.17" x 1.73" |
| Compliance | MEF 2.0, CE 2.0, RoHS |

Features and Capabilities

| | |
|--------------------------------|--|
| Ethernet Services | <ul style="list-style-type: none"> - Supports ELINE, ELAN - ETREE with jumbo frame support for high-efficiency traffic management |
| IP Services | <ul style="list-style-type: none"> - IPv4/v6 routing with BGP, OSPF - VRF Lite for flexible deployment options |
| MPLS Services | <ul style="list-style-type: none"> - L2VPN, VPLS, and H-VPLS - SR optimized for seamless - MPLS and high-capacity aggregation |
| QoS Capabilities | <ul style="list-style-type: none"> - Hierarchical traffic management with advanced scheduling and shaping options for SLA assurance |
| OAM & SLA Assurance | <ul style="list-style-type: none"> - Comprehensive support for Y.1731, TWAMP - Y.1564 to monitor and maintain service quality |

Applications



Ordering Information

| Part Number | Description |
|----------------------|--|
| XM-7280-2AC | Standard 1U, IP/MPLS device, 4x10G SFP NNI + 24x10G/1G SFP UNI CE/MPLS (28x10G SFP+), CONSOLE and SNMP ports for management, dual hot-swappable AC power supplies |
| XM-7280-AC | Standard 1U, IP/MPLS device, 4x10G SFP NNI + 24x10G/1G SFP UNI CE/MPLS (28x10G SFP+), CONSOLE and SNMP ports for management, single hot-swappable AC power supply |
| XM-7280-2DC | Standard 1U, IP/MPLS device, 4x10G SFP NNI + 24x10G/1G SFP UNI CE/MPLS (28x10G SFP+), CONSOLE and SNMP ports for management, dual hot-swappable DC power supplies |
| XM-7280-DC | Standard 1U, IP/MPLS device, 4x10G SFP NNI + 24x10G/1G SFP UNI CE/MPLS (28x10G SFP+), CONSOLE and SNMP ports for management, single hot-swappable DC power supply |
| XM-7280-AC/DC | Standard 1U, IP/MPLS device, 4x10G SFP NNI + 24x10G/1G SFP UNI CE/MPLS (28x10G SFP+), CONSOLE and SNMP ports for management, dual hot-swappable AC_DC power supplies |

Experience the Power of X-Series: Invest in **X-Metro 7280** to boost your network. Contact Telco Systems at sales@telco.com or visit our website www.telco.com.