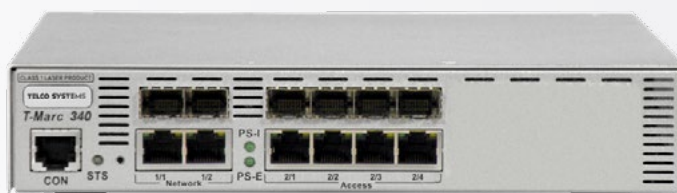


TELCO SYSTEMS

TM-340



Compact, Hardened, and SLA-Assured Carrier Ethernet NID

Telco Systems T-Marc 340 (TM-340) is a Carrier Ethernet 2.0-certified, compact 1RU, ½-width Network Interface Device (NID) designed for high-performance business Ethernet and Internet services. Built to deliver assured SLAs, hardware-based OAM, and sub-50 ms protection, it enables service providers to offer premium business connectivity services with superior resiliency and monitoring.

Offering six 10/100/1000Base-T or SFP combo ports in a 10 Gbps non-blocking platform, T-Marc 340 ensures high reliability, extended operation, and flexible AC/DC power options, ideal for indoor or outdoor business service deployments. With precise synchronization, advanced OAM, and sub-50 ms resiliency, the T-Marc 3312 delivers SLA-assured connectivity and enables a smooth migration from TDM to packet networks.

Highlights

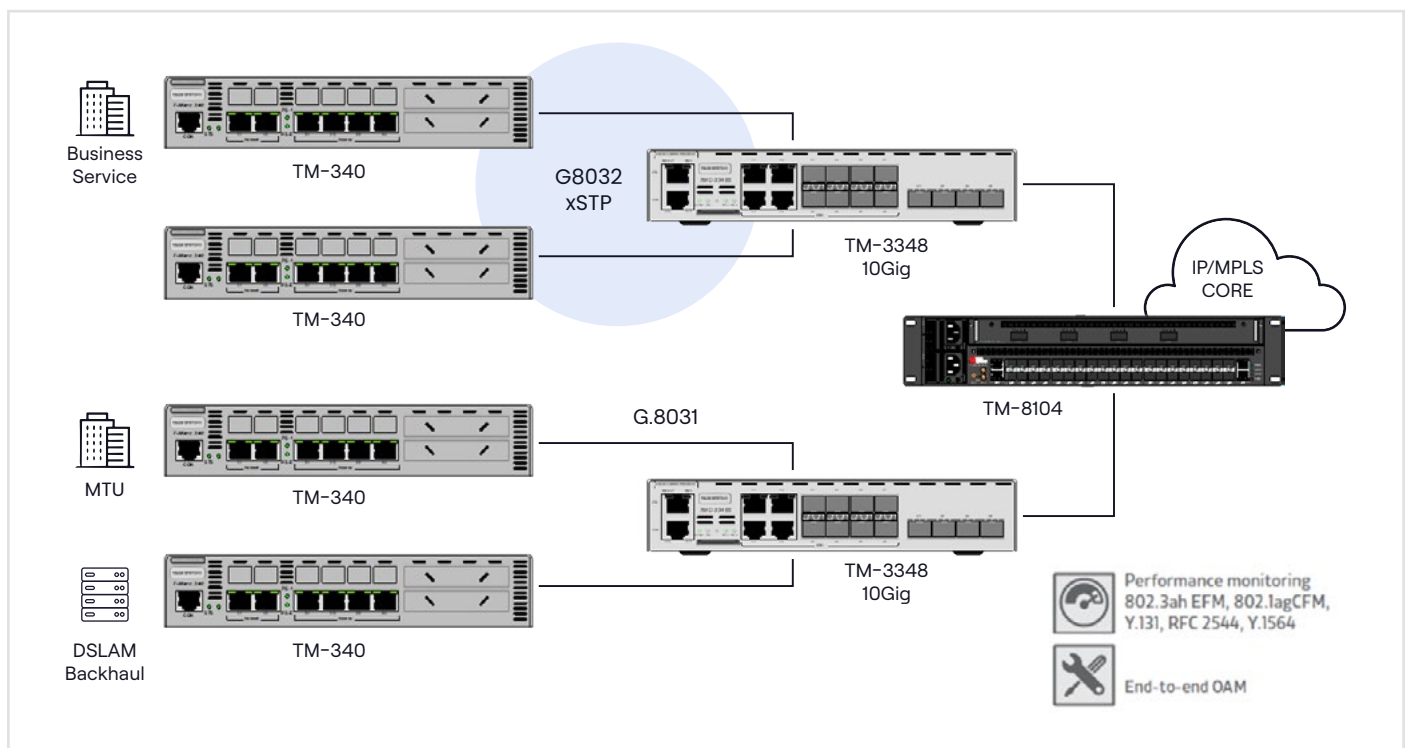
Assured Carrier Ethernet Services	MEF-compliant demarcation with per-service visibility and guaranteed SLA performance.
Hardware-Based OAM & Testing	Comprehensive 802.3ah, 802.1ag, Y.1731, and RFC 2544 tools for fast activation and real-time monitoring.
Granular HQoS Traffic Control	Advanced shaping, policing, and hierarchical scheduling for predictable, multi-service performance.
Carrier-Grade Resiliency	Sub-50ms protection with G.8031, G.8032, xSTP, and LAG for uninterrupted service continuity.

General Specifications

Operating System	BiNOS®
Dimensions (H × W × D)	44 mm × 221 mm × 235 mm (1.75 in × 8.7 in × 9.25 in)
Weight	1.1 kg (2.42 lbs)
Power Input	AC 100–240 V, 50/60 Hz / DC -24 to -72 V (dual-feed)
Operating Temperature	Standard 0°C to +50°C / Extended -2°C to +65°C / Hardened -40°C to +65°C
Humidity	10%–90% (non-condensing)
Compliance	MEF 9, MEF 14, MEF CE 2.0, NEBS Level 1, RoHS, FCC Part 15 Class B

Features and Capabilities

Hardware-based OAM	- IEEE 802.3ah, 802.1ag, Y.1564, Y.1731, RFC 2544, TWAMP for SLA assurance and testing
Resiliency	- G.8031, G.8032v2, Fast Ring, xSTP, LAG (static/LACP), and Resilient Link with sub-50 ms protection
QoS Capabilities	- Hierarchical QoS with per-EVC, per-flow, and per-port control for differentiated service delivery
Timing	- IEEE 1588v2 PTP synchronization for precision timing and service assurance
Management	- SNMP v1/v2/v3, RADIUS, TACACS+, SSHv2, Zero-Touch, EdgeGenie™ integration
Security	- ACLs, port security, SSHv2/RADIUS authentication, and broadcast storm protection



Key Applications

- Managed business Ethernet services with per-service SLA enforcement
- Exchange NNI demarcation for carrier interconnects
- SLA assurance demarcation, including monitoring and test head probing
- OAM-monitored networks for proactive performance management
- High-quality Internet access and premium enterprise connectivity

Technical Specifications

Hardware Characteristics	6 × 10/100/1000 Base-T or 100/1000Base-X Combo SFP ports
Switching Fabric	10 Gbps full-duplex non-blocking
Power Input	AC 100–240 V, 50/60 Hz / DC -24 to -72 V (dual-feed)
Power Consumption	Typical 25 W, Max 45 W
Form Factor	1RU (½ width), wall/desk/rack-mountable
HQoS	Hierarchical QoS with per-service shaping, policing, and scheduling
Resiliency	Sub-50 ms recovery (G.8031, G.8032, Fast Ring, LAG, BFD, xSTP, Resilient Link)
QoS	Per-port/EVC/flow shaping, policing, hierarchical SP/WRR scheduling
OAM & Testing	IEEE 802.3ah, 802.1ag, ITU-T Y.1564, RFC 2544, Y.1731, TWAMP
Timing	IEEE 1588v2 PTP for precise one-way measurement
Security	ACLs, RADIUS, SSHv2, SNMPv3, SFTP, port security, storm protection
Management	Console, Telnet, SSHv2, SNMP v1/2/3, RADIUS, TACACS+, Zero-Touch
Certifications	MEF 9 & 14, CE 2.0, NEBS Level 1, FCC Part 15 Class B, EN 55022 Class B, RoHS/REACH
Regulatory compliance	Europe: EMC DIRECTIVE 2014/30/EU, including EN 300386 NA: FCC 47 CFR Part 15 Class A (USA) ICES-003 Issue 4 Class A (Canada) Telcordia GR-1089 issue 4
Environmental and Safety	EU LVD DIRECTIVE 2014/35/EU EU RoHS DIRECTIVE 2011/65/EU, Directive (EU) 2015/863 UL/CSA safety 60950-1 NEBS3 compliant Class 1 Laser product safety (eye safety) IEC 60825-1

Ordering Information

Part Number	Description
TMC-340-z	6 × Fiber/Copper, AC, 0°C to 50°C, Standard model
TMC-340-2DC	6 × Fiber/Copper, Dual feed DC, 0°C to 50°C, DC input model
TMC-340-z-E	6 × Fiber/Copper, AC, -20°C to 65°C, Extended temperature
TMC-340-EW	6 × Fiber/Copper, Dual feed DC, -40°C to 65°C, Hardened model for outdoor use
TMC-340-x-F / DC-F	2 × Copper + 4 × Fiber, AC / DC, 0°C to 50°C, Mixed port model option

Experience the Power of T-Series: T-Marc 340 | Carrier Ethernet 1GE Demarcation.

Enhance your network with reliable, SLA-assured service demarcation.

Contact us at salesnetworks@batm.com or visit our website www.telco.com for more information.