

TELCO SYSTEMS

XM-3306



High-Performance Carrier Ethernet NID

Optimize your network with the XM-3306, a compact yet powerful Carrier Ethernet NID designed for solid, high-performance connectivity. This device is perfect for business services and mobile backhaul, delivering guaranteed service levels, advanced security, and superior QoS.

Featuring SyncE support, hardware-based SLA monitoring, and robust redundancy mechanisms, the XM-3306 ensures a reliable and future-proof solution for modern networks.

Highlights

Application Deployment

A demarcation device typically deployed in Business Service and Mobile Backhaul applications for up to 1G hand offs.

Hardware Based OAM

Delivers accurate SLA monitoring a key feature for this device along with guaranteed service delivery.

Zero Touch Provisioning

Makes service provisioning and deployment more efficient.

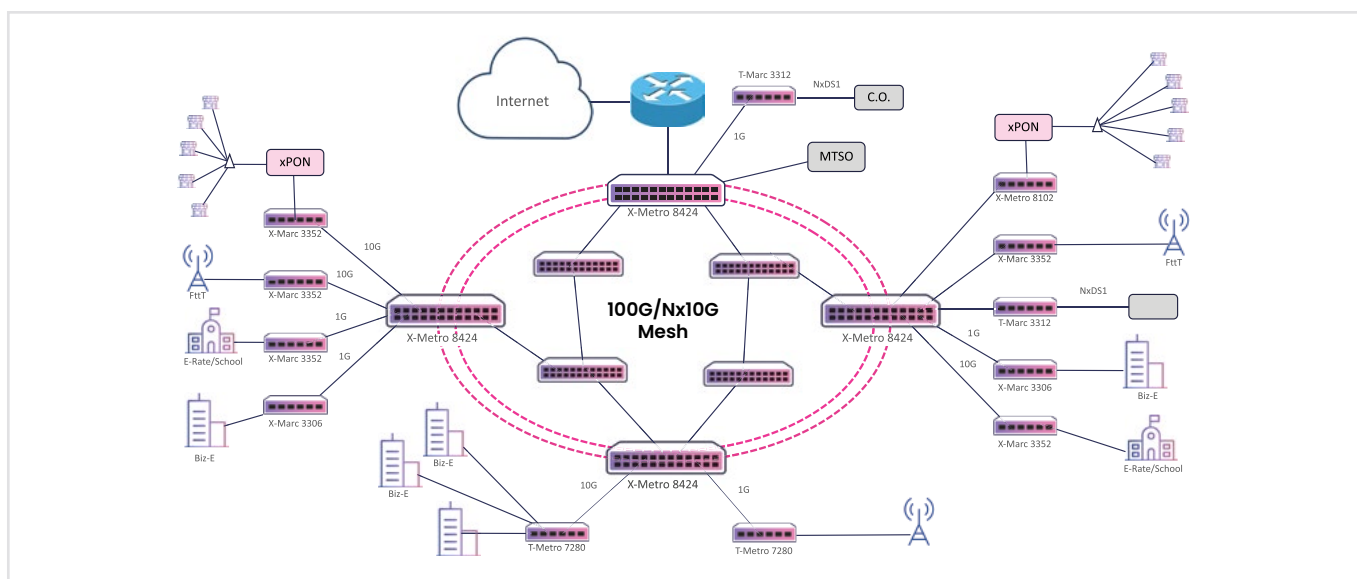
Technical Specifications

Interfaces	XM-3306 (4×1G Copper Ports + 2×1G SFP Ports) XM-3306C (4×1G Combo Ports + 2×1G SFP Ports)
Switching Capacity	12Gbps
Synchronization	SyncE
Management	CLI, SNMP, Netconf, USB, Telnet, SSHv2
QoS Features	Advanced QoS based on CoS, DSCP, IP precedence and priority; scheduling modes including SP, WRR, SP+WRR; WRED
Security	ACL based on VLAN, CoS, MAC, EtherType, IPv4, IPv6, RADIUS, TACACS+ Storm control
Redundancy	LAG, G8031/G8032, Local Loop Detection
Power Supply	100/240V AC -36 to -72V DC 24V DC
Operating Temperature	-20C to +65C
Power Dissipation	<=25W
Dimensions (WxDxH)	22 cm x 18 cm x 4.3 cm 17.32" x 14.17" x 1.73"
Weight	<=2.5kg

Features and Capabilities

Ethernet Services	- MEF EPL/EVPL, EPLAN/EVPLAN, ETREE
IP Services	- DHCP client, IPv4, static routing
QoS Capabilities	- up to 8 queues per port MEF-compliant. Supports SP, WRR & SP+WRR scheduling
Reliability	- ACL based on VLAN, CoS, MAC, EtherType, IPv4, IPv6, RADIUS, TACACS+ Storm control
OAM & SLA Assurance	- EFM, CFM with 3.3.ms CCM, ITU-T Y.1731, Y.1564 Service - Activation, Dying Gasp (Hardware Based OAM)

Applications



Ordering Information

Part Number	Description (4 × 1G Copper + 2×1G SFP)
XM-3306-AC-x	CE Switch, 4*1G BASE-TX port, 2*1G SFP, single AC power supply
XM-3306-DC	CE Switch, 4*1G BASE-TX port, 2*1G SFP, single DC power supply
XM-3306-2AC-x	CE Switch, 4*1G BASE-TX port, 2*1G SFP, single DC power supply
XM-3306-2DC	CE Switch, 4*1G BASE-TX port, 2*1G SFP, dual DC power supply
XM-3306-AC/DC	CE Switch, 4*1G BASE-TX port, 2*1G SFP, one AC power supply and one DC power supply

Part Number	Description (4 × 1G Combo + 2×1G SFP)
XM-3306C-AC-x	CE Switch, 4*1G Combo port, 2*1G SFP, single AC power supply
XM-3306C-DC	CE Switch, 4*1G Combo port, 2*1G SFP, single DC power supply
XM-3306C-2AC-x	CE Switch, 4*1G Combo port, 2*1G SFP, dual AC power supply
XM-3306C-2DC	CE Switch, 4*1G Combo port, 2*1G SFP, dual DC power supply
XM-3306C-AC/DC	CE Switch, 4*1G Combo port, 2*1G SFP, one AC power supply and one DC power supply

Experience the Power of Telco Systems X-Series: Invest in **XM-3306** to boost your network. Contact Telco Systems at sales@telco.com or visit our website www.telco.com.