

TELCO SYSTEMS

XM-3352



Scalable, High-Performance Ethernet in a Compact Design

The **XM-3352** is part of the **X-Series**, offering a compact and powerful Carrier Ethernet solution tailored for modern service providers.

The XM-3352 supports a range of applications including **mobile backhaul**, **enterprise connectivity**, and **residential broadband** services, ensuring reliable and scalable network performance with **Layer 2/3 VPN**, **MPLS support**, and comprehensive **OAM tools**.

Highlights

Future-Proof Design

Designed to support the latest Carrier Ethernet standards, ensuring long-term scalability and investment protection.

Scalability

Easily adaptable to meet growing network demands with high port density and flexible interface options.

Advanced Traffic Management

Provides superior **Quality of Service (QoS)**, **traffic shaping**, and **hierarchical queuing** for optimal performance.

OAM and Performance Reporting

The **OAM protocol suite** enables proactive service monitoring, delivering real-time and historical reports to ensure efficient operations.

Technical Specifications

Interfaces	12 × 1G SFP & 4 × 10G SFP+
Switching Capacity	52 Gbps
Latency	Sub-1 microsecond switching latency
Management	CLI, SNMP, Web-based GUI, REST API
QoS Features	8 hardware queues per port, traffic shaping
Security	802.1x, ACLs, encryption (MACsec*)
Redundancy	Dual redundant power supplies, failover
Power Supply	100-240V AC, 48-60V DC
Enclosure Type	1U, 19" rack-mountable
Dimensions (WxDxH)	22 cm x 26.6 cm x 4.4 cm 8.66" x 10.47" x 1.73"
Operating Temperature	-20°C to +65°C (Extended Temperature)
Certification	MEF 2.0, CE 2.0, RoHS, CE, FCC

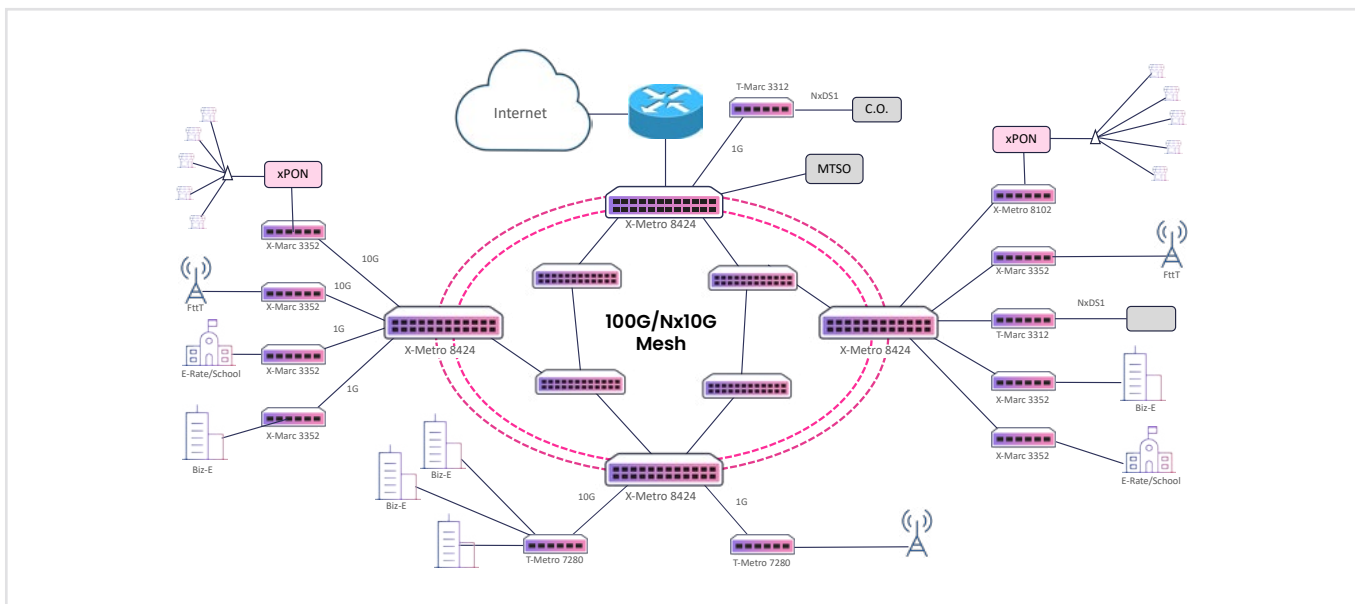
* in future release



Features and Capabilities

Ethernet Services	<ul style="list-style-type: none"> - 32k MAC address table - All MEF services (E-LINE, E-LAN, E-TREE, E-ACCESS) - 12,288 Bytes jumbo frame support
IP Services	<ul style="list-style-type: none"> - IPv4/v6 static routing, RIP, OSPF, ISIS, BGP - VRF Lite, DHCP server/client/relay/snoping
MPLS Services	<ul style="list-style-type: none"> - MPLS L2VPN, L3VPN, VPWS, VPLS, H-VPLS - MPLS TE, RSVP-TE, MPLS Fast Reroute
QoS Capabilities	<ul style="list-style-type: none"> - Classification based on MAC, IP, port, VLAN, CoS - Traffic shaping, WRED, SP/WRR queue scheduling
Reliability	<ul style="list-style-type: none"> - IEEE 802.1ax Link Aggregation (LACP) - ITU-T G.8031/32, VRRP, MPLS PW redundancy
OAM & SLA Assurance	<ul style="list-style-type: none"> - Hardware-based IEEE 802.1ag/ITU-T Y.1731 performance monitoring - RFC2544, Y.1564 tests, BFD for fast fault detection
Synchronization	SyncE, IEEE 1588v2 (TC) for high-precision timing

Applications



Mobile Backhaul

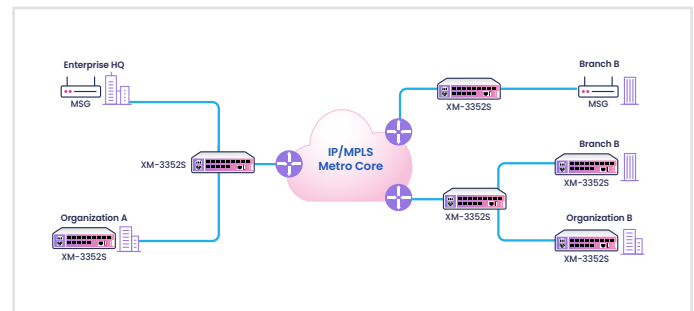
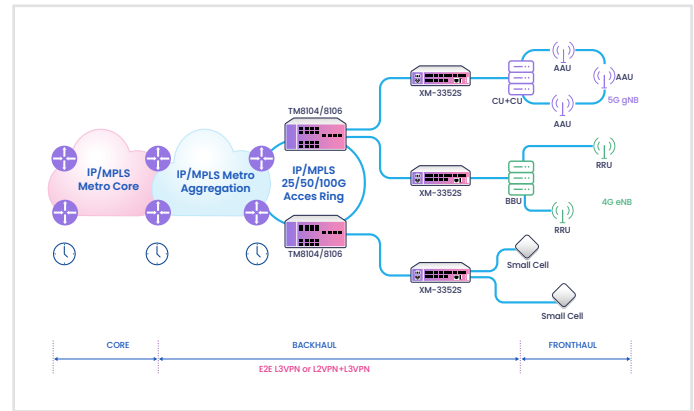
The XM-3352 supports **MPLS L2VPN/L3VPN services**, ensuring reliable mobile backhaul aggregation with precise synchronization for **4G/5G networks**.

Enterprise Connectivity

Offers secure and robust **Ethernet and VPN services**, ensuring high availability and performance for enterprise network environments.

High-Speed Broadband

Ideal for service providers delivering high-speed broadband services, including **IPTV, VoIP**, and other high-bandwidth applications..



Ordering Information

Part Number	Description
XM-3352-AC-NA	Compact 10G NID, half-19" wide, 4x10G SFP+ for uplink, 12x1G SFP for downlink, CONSOLE and SNMP ports for management, single swappable AC power supply
XM-3352-DC	Compact 10G NID, half-19" wide, 4x10G SFP+ for uplink, 12x1G SFP for downlink, CONSOLE and SNMP ports for management, single swappable DC power supply
XM-3352-2AC-NA	Compact 10G NID, half-19" wide, 4x10G SFP+ for uplink, 12x1G SFP for downlink, CONSOLE and SNMP ports for management, dual hot-swappable AC power supply
XM-3352-2DC	Compact 10G NID, half-19" wide, 4x10G SFP+ for uplink, 12x1G SFP for downlink, CONSOLE and SNMP ports for management, dual hot-swappable DC power supply
XM-3352-AC/DC	Compact 10G NID, half-19" wide, 4x10G SFP+ for uplink, 12x1G SFP for downlink, CONSOLE and SNMP ports for management, one hot-swappable AC power supply and one hot-swappable DC power supply
XM-3352-BRKT	19" mounting bracket for XM-3352 (Can accommodate 1 or 2 units XM-3352)
XM-3352-ACPS-NA	XM-3352 AC Power Supply
XM-3352-DCPS	XM-3352 DC Power Supply

Experience the Power of the Telco Systems X-Series: Invest in the **XM-3352** to boost your network.

Contact Telco Systems at sales@telco.com to learn how the XM-3352 can transform your network.