

TELCO SYSTEMS

XM-7280



Compact High-Performance Carrier Ethernet Switch

Built with advanced Layer 2/3, MPLS, QoS capabilities, the XM-7280 supports critical applications such as 4G/5G mobile backhaul, business services, and data center interconnects. It ensures reliability and scalability while meeting diverse requirements for bandwidth, latency, and packet loss.

The XM-7280 supports 1588v2 (OC, BC, and TC) for high-precision clock synchronization and is compliant with ITU-T G.8275.1, making it ideal for next-generation mobile backhaul and fixed-mobile convergence networks.

Highlights

Compact Design with High Capacity

Delivers 500 Gbps switching capacity in a compact 1RU form factor, ideal for space-constrained environments.

Precision Synchronization

Equipped with **SyncE** and **1588v2** for precise timing, ensuring reliable performance for critical applications.

Flexible Connectivity Options

Features **28 × 10G/1G SFP+ ports**, providing scalable solutions for high-bandwidth demands.

Robust Network Reliability

Built with advanced hardware-based OAM and redundancy mechanisms to ensure network uptime and service continuity.

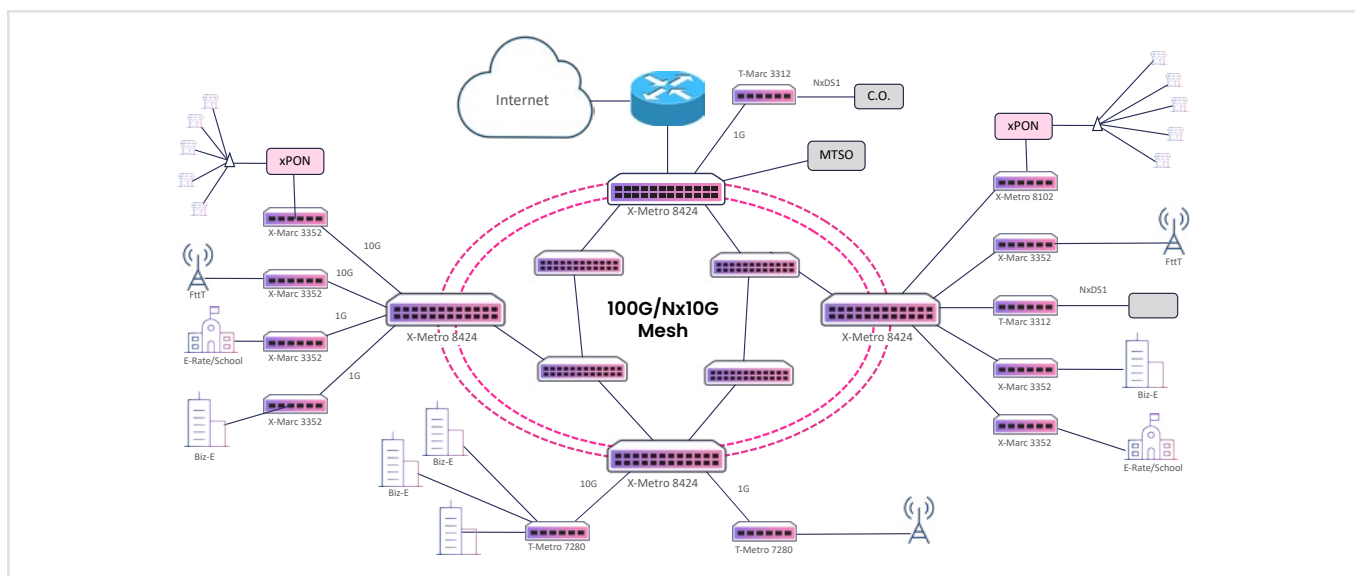
Technical Specifications

Interfaces	28 × 10G/1G SFP+
Switching Capacity	500 Gbps
Synchronization	SyncE, 1588v2 (OC, BC, TC)
Management	CLI, SNMP, Netconf, USB, Telnet, SSHv2
QoS Features	8 queues per port, WRED, SP/WRR
Security	ACLs, RADIUS, TACACS, 802.1x
Redundancy	Dual AC/DC power, LAG, MC-LAG
Operating Temperature	-5°C to +55°C
Enclosure Type	1U, 19" rack-mountable
Dimensions (WxDxH)	44 cm x 36 cm x 4.4 cm 17.32" x 14.17" x 1.73"
Compliance	MEF 2.0, CE 2.0, RoHS

Features and Capabilities

Ethernet Services	<ul style="list-style-type: none"> - Supports ELINE, ELAN - ETREE with jumbo frame support for high-efficiency traffic management
IP Services	<ul style="list-style-type: none"> - IPv4/v6 routing with BGP, OSPF - VRF Lite for flexible deployment options
MPLS Services	<ul style="list-style-type: none"> - L2VPN, VPLS, and H-VPLS - SR optimized for seamless - MPLS and high-capacity aggregation
QoS Capabilities	<ul style="list-style-type: none"> - Hierarchical traffic management with advanced scheduling and shaping options for SLA assurance
OAM & SLA Assurance	<ul style="list-style-type: none"> - Comprehensive support for Y.1731, TWAMP - Y.1564 to monitor and maintain service quality

Applications



Ordering Information

Part Number	Description
XM-7280-2AC	Standard 1U, IP/MPLS device, 4×10G SFP NNI + 24×10G/1G SFP UNI CE/MPLS (28×10G SFP+), CONSOLE and SNMP ports for management, dual hot-swappable AC power supplies
XM-7280-AC	Standard 1U, IP/MPLS device, 4×10G SFP NNI + 24×10G/1G SFP UNI CE/MPLS (28×10G SFP+), CONSOLE and SNMP ports for management, single hot-swappable AC power supply
XM-7280-2DC	Standard 1U, IP/MPLS device, 4×10G SFP NNI + 24×10G/1G SFP UNI CE/MPLS (28×10G SFP+), CONSOLE and SNMP ports for management, dual hot-swappable DC power supplies
XM-7280-DC	Standard 1U, IP/MPLS device, 4×10G SFP NNI + 24×10G/1G SFP UNI CE/MPLS (28×10G SFP+), CONSOLE and SNMP ports for management, single hot-swappable DC power supply
XM-7280-AC/DC	Standard 1U, IP/MPLS device, 4×10G SFP NNI + 24×10G/1G SFP UNI CE/MPLS (28×10G SFP+), CONSOLE and SNMP ports for management, dual hot-swappable AC_DC power supplies

Experience the Power of Telco Systems X-Series: Invest in **XM-7280** to boost your network.

Contact Telco Systems at sales@telco.com or visit our website www.telco.com.