

EdgeGenie Orchestrator

Service Management for Carrier Ethernet & MPLS Networks

EdgeGenie is a service management and orchestration platform designed to provision, monitor, maintain, and optimize Carrier Ethernet and MPLS services across the network.

A unified operational view of services and network resources enables faster service deployment, improved visibility, and efficient fault handling across multi-domain environments.

When to Use EdgeGenie

01 Faster Provisioning

Automate end-to-end service deployment across Ethernet and MPLS networks. Reduce reliance on CLI-based configuration and ensure consistent service setup.

02 SLA Assurance

Monitor service performance continuously and correlate network events with service impact.

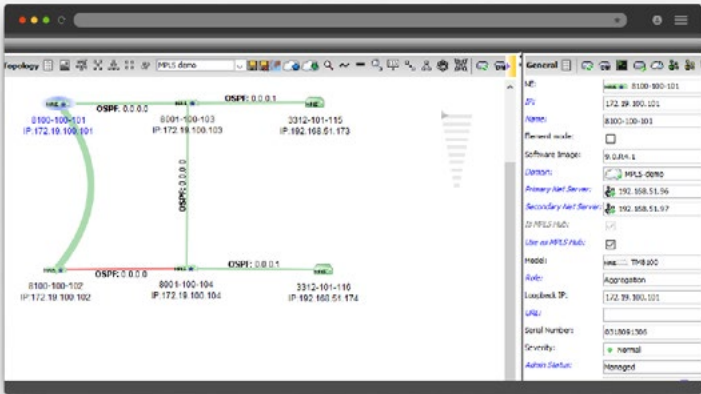
Enable proactive fault detection and faster resolution.

03 Network Visibility

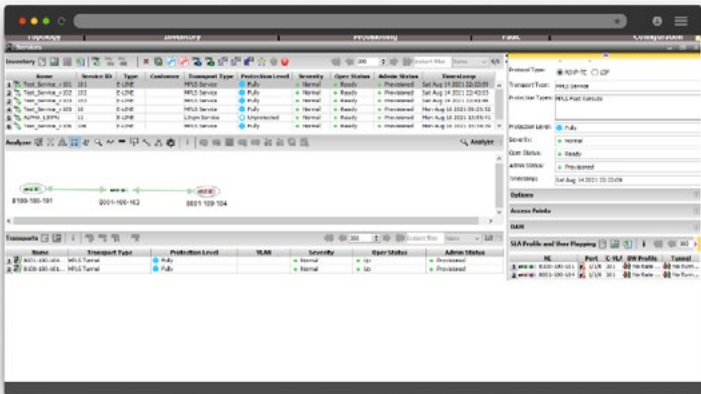
Visualize services and their paths across the network in real time.

Understand dependencies and isolate issues without manual data correlation.

★ **EdgeGenie** can also be deployed alongside existing systems through open interfaces.



Integration with existing OSS/BSS systems is supported through standard northbound APIs (e.g., MTOSI-compliant interfaces).



EdgeGenie is an optional platform, allowing operators to deploy it as a primary orchestrator or integrate it within existing OSS/NMS environments.

Core Capabilities

✓ Service Provisioning & Protection

EdgeGenie enables end-to-end service creation across Ethernet and MPLS networks. Services are defined once, and the system handles path computation, protection, and deployment.

✓ Service Visibility & Analysis

EdgeGenie provides graphical visualization of services and their paths across the network, reducing troubleshooting time and improving operational clarity. Includes a graphical service analyzer for visualization of service topology, attributes, and protection paths.

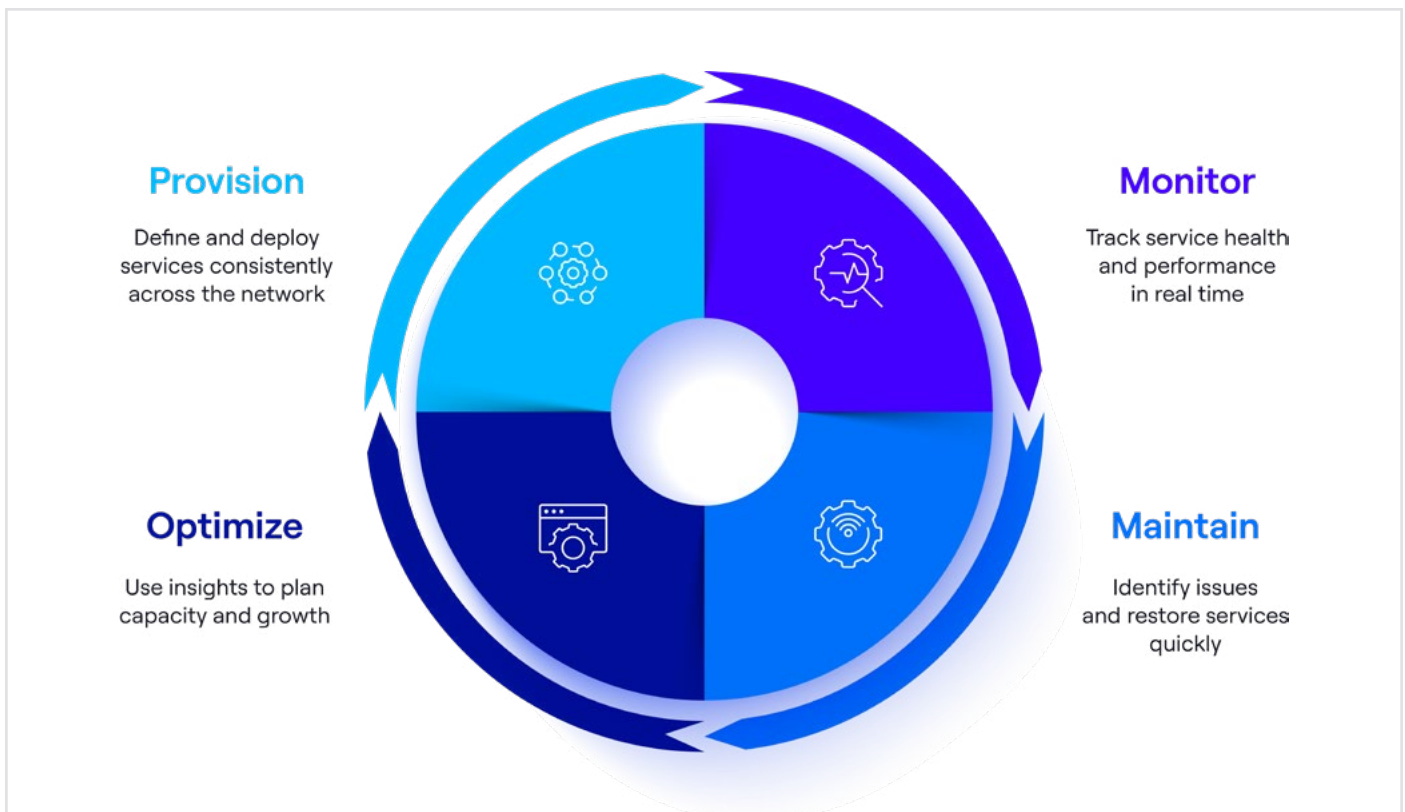
✓ Performance & SLA Assurance

EdgeGenie continuously monitors service performance and detects degradation, enabling proactive issue detection before SLA impact occurs.

✓ Integration & Operational Scale

EdgeGenie includes support for northbound API integration with OSS/BSS systems, allowing gradual adoption without disrupting existing operational workflows.

How it Works



Service Lifecycle Management

EdgeGenie manages services across their full lifecycle, from provisioning through continuous monitoring, maintenance, and optimization.

These stages operate as a closed operational loop, enabling services to adapt dynamically to network conditions and operational events.

This approach improves service reliability, simplifies operations, and reduces manual intervention.

Features and Capabilities

| | |
|--------------------------------------|---|
| Technical Scope | <ul style="list-style-type: none"> - Carrier Ethernet OAM and performance monitoring tools are used for SLA validation and troubleshooting - Supported services and protocols include: MEF services (E-Line, E-LAN, E-Tree), MPLS L2/L3 services, OAM-based SLA monitoring (Y.1731, RFC2544, TWAMP) - Supports multi-domain service environments across Ethernet and MPLS networks |
| Key Functions | <ul style="list-style-type: none"> - End-to-end service provisioning and protection - Automated path computation with redundancy - Device-level monitoring and management with real-time operational visibility - SLA visibility, and root cause analysis - Service-aware fault and impact analysis - Service maintenance operations including reroute, restoration, and planned network changes - Configuration backup and recovery - Northbound OSS/BSS integration - Scalable multi-server architecture |
| Deployment Model | <ul style="list-style-type: none"> - EdgeGenie can be deployed as: <ul style="list-style-type: none"> A centralized orchestration platform A monitoring and assurance layer Integration with existing OSS/BSS systems - Built on a scalable multi-server architecture with support for distributed deployments |
| Supported Network Environment | <ul style="list-style-type: none"> - EdgeGenie supports Carrier Ethernet and MPLS networks including demarcation, aggregation, and multi-domain Carrier Ethernet and MPLS environments |

Summary

EdgeGenie provides a practical approach to service management by combining provisioning, monitoring, and operational insight into a single, unified platform.

Experience the power of proactive service assurance for Carrier Ethernet & MPLS: Invest in **EdgeGenie Orchestrator** to boost your network. For more information contact us at salesnetworks@batm.com